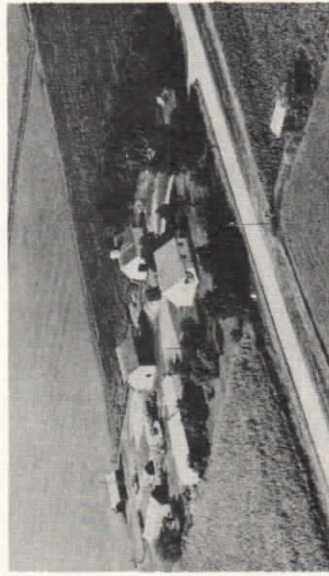


The log cabin in Old Settlers' Park was built in 1890 and is dedicated to all Humboldt County pioneers. Every September, the Old Settlers' Picnic serves to commemorate the courage of the early settlers.

In 1848 the first white man in Humboldt County built a log cabin on the banks of the Des Moines River near the mouth of Lott's Creek. Henry Lott was a trapper and sold whiskey to the Indians. After a tribe of Sioux left his home in shambles when they found no "firewater," Lott ambushed and brutally murdered the entire family of Chief Sidominadofa along the banks of Bloody Run Creek. It is believed this event triggered the Spirit Lake Massacre of 1857. Historical markers denote both the site of Lott's cabin and the Indian murders.



Livermore is surrounded by some of the best agricultural land in the world. Its rich soil produces a variety of grain crops which are raised on many prosperous farms dotting the countryside.

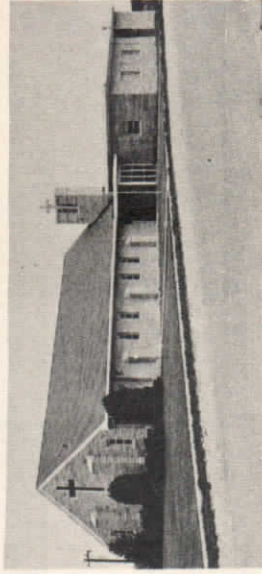
Livermore is in the heart of Iowa's hog and beef cattle producing area and is a livestock shipping center. Livermore's co-operative grain terminal ships corn and soybeans on both railroads serving the community, the Rock Island and the Chicago and North Western.



Faith in Livermore's future was demonstrated recently when a new supermarket was opened. Gary's Clover Farm Store was a fine addition to the business district.

Grandfather clocks and other beautiful hand-crafted walnut furniture from Livermore's two cabinet makers' shops are sold all over the nation. Seeing the finished products from these firms is alone worth a trip to Livermore.

Livermore's 158-member Community Club, composed of both farm folk and townspeople, offers proof that the community believes in its slogan, "More to Live For in Livermore."

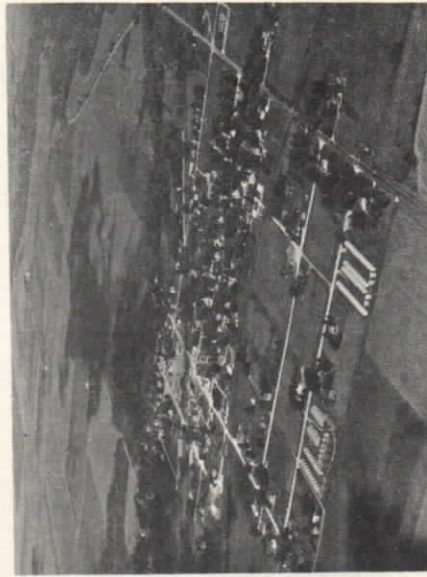


Church worship is a family way of life in Livermore. With four churches, the community is guided to a closer understanding of one another. The oldest church, Bethel United Presbyterian, celebrated its 100th anniversary in 1970. The other churches include Sacred Heart Catholic, Livermore United Methodist and Immanuel Lutheran (shown above).

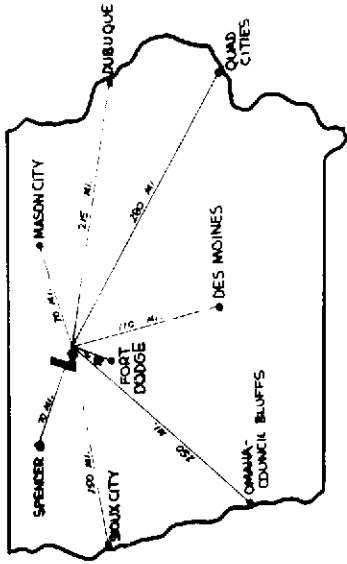
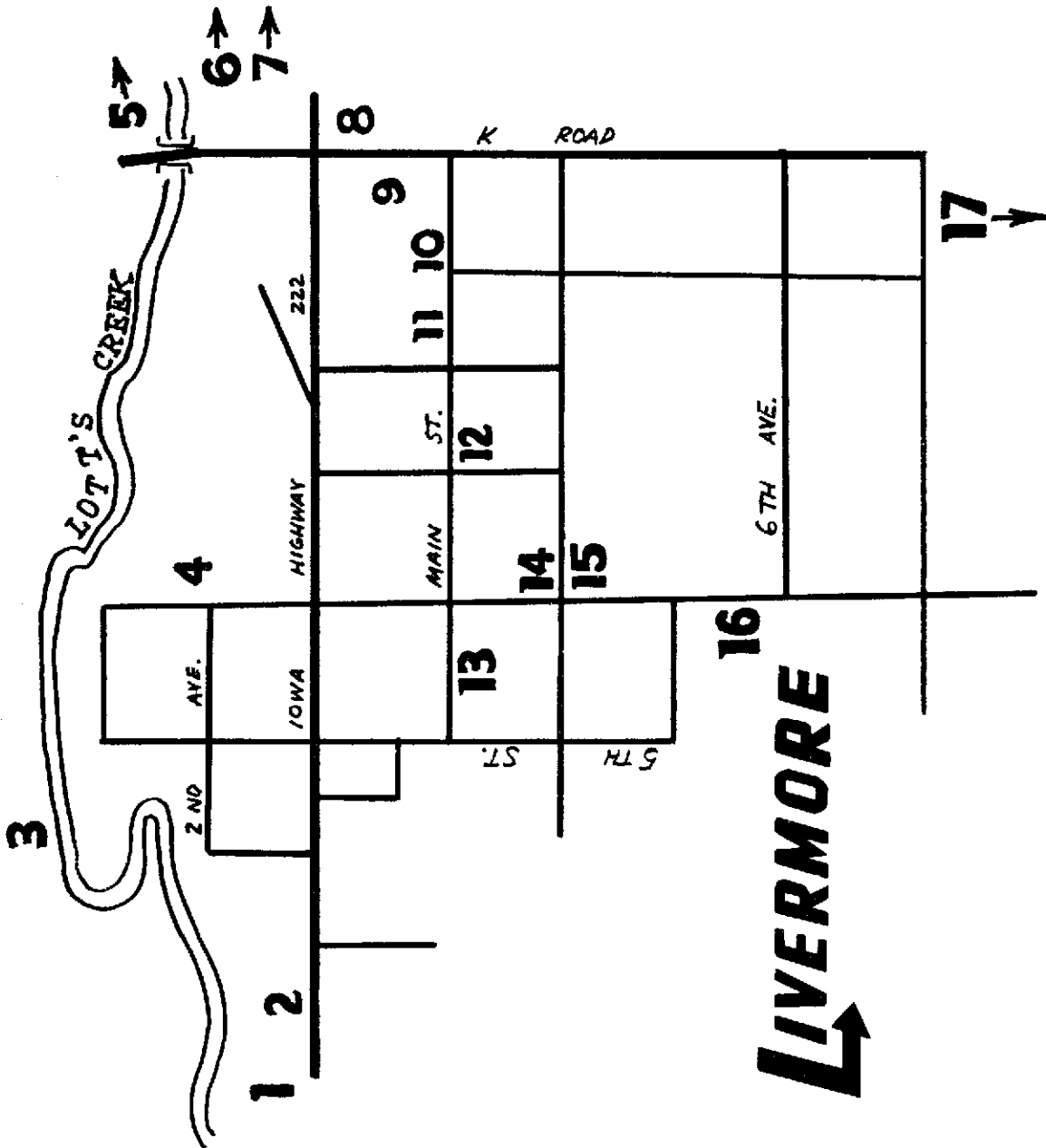
Livermore consists of community, civic, and fraternal organizations. It is a community of promise and progress. We think you'll like Livermore. Visit us and see why!

For further information write: **LIVERMORE COMMUNITY CLUB, LIVERMORE, IOWA 50558.**

LIVERMORE
welcomes you!



Livermore, Iowa, is a small town with a big heart. The 510 friendly citizens are proud of their community; its schools, churches and businesses. Livermore is a community where you can breathe clean, fresh air, leave your doors unlocked, and stroll the tree-lined streets after dark.



1. Lott's Creek Campground
2. Old Settlers' Park
3. Future site, artificial lake
4. Gun club
5. 1 mile northeast, site of Henry Lott's pioneer cabin
6. ½ mile, East Fork Des Moines River
7. 1 mile, Twin Rivers Saddle Club arena
8. Immanuel Lutheran Church
9. Athletic field
10. Sacred Heart Catholic Church
11. School
12. Bethel United Presbyterian Church
13. Business District
14. Livermore United Methodist Church
15. City Hall, Fire Station, Community Library
16. Retirement Apartment Complex
17. 3½ miles, site of Henry Lott's massacre of Sioux Indians